



**STUDIO MONTCLAIR OPENS  
“CONSIDERING COLLAGE”  
AT THE SMI GALLERY @ ACADEMY SQUARE**

\*  
May 20, 2011

**FOR IMMEDIATE RELEASE**

Montclair, NJ, May 2011

Studio Montclair (SMI) is pleased to announce “Considering Collage,” an exhibit on view from **May 20 to August 12, 2011**, at the SMI Gallery @ Academy Square. An opening reception will be held at the gallery in the Academy Square building (33 Plymouth St., Montclair, NJ) on **Friday, May 20, from 6 to 9 pm**. The gallery is open to the public 9 am to 5 pm Monday through Friday or by appointment

“**Considering Collage**” features the work of artists who work primarily in the collage medium. Each was selected by curator Pam Cooper to “reflect the range of the possibility of collage.” Cooper notes that the artists “have constructed their pieces from handmade and precious papers, photographs, newspaper and magazine clippings, images of sacred texts, monoprints, and collected objects. They have used collage techniques within paintings and painted on top of their collages. Their works include minimalist abstractions, realistic landscapes, snapshots into daily life, and elaborate works of obsessive detail. Some of the artists use traditional collage techniques such as photomontage while others use the colors and patterns of their source materials to “paint” pictures in much the same way as painters use a palette. This exhibit displays the boundless and exciting options of the medium of collage.”

An artist herself, Cooper uses mixed media in her sculpture, papermaking and printmaking work. She has curated exhibitions for a number of non-profit organizations in the Metro area and has also served as a corporate art consultant and curator for the past five years. The featured artists are Emily Barnett, Virginia S. Block, Circe Dunnell, Cecily Firestein, Linda Ippolito, Elizabeth Smith Jacobs, Rachel Leibman, Katy Murphy, Barbara Straussberg, and Paula Stark.

**Studio Montclair Inc.** is a non-profit organization of exhibiting professional and emerging artists and others interested in the visual arts. The mission of the organization is to promote culture and education in the visual arts.

This program is made possible in part by funds from the New Jersey State Council on the Arts/Department of State, a Partner Agency of the National Endowment for the Arts and administered by the Essex County Division of Cultural and Historic Affairs.

**Listing Information About the Exhibit:**

**THE SMI GALLERY @ ACADEMY SQUARE** – Ground floor of the Academy Square building.

**“Considering Collage”**

*Featuring the work of Emily Barnett, Virginia Schaffer Block, Circe Dunnell, Cecily Barth Firestein, Linda Ippolito, Elizabeth Smith Jacobs, Rachel Leibman, Katy Murphy, Paula Stark, Barbara Straussberg.*

**Exhibition Dates:** May 20 – August 12, 2011

**Opening Reception:** Friday, May 20, 2011, 6 – 9 pm

**Gallery Hours:** Monday-Friday 9 am – 5 pm or by appointment

**Address:** 33 Plymouth Street, Montclair, NJ 07042 ~ 973 744 1818

**Email:** [studiomontclair@aol.com](mailto:studiomontclair@aol.com)

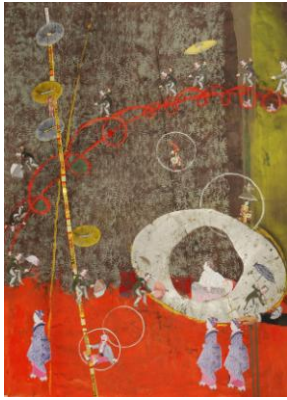
**Website:** [www.studiomontclair.org](http://www.studiomontclair.org)

**Media Contact:** Yvette Lucas [info@yvettelucas.com](mailto:info@yvettelucas.com) 973-809-8261

**SMI’s mailing address:** 108 Orange Road, Montclair, NJ 07042

To download jpegs click on the image title.

**CONSIDERING COLLAGE JPEGS:**



Cecily Barth Firestein,  
[Equilibrists' Arena](#)  
Tempera, Monotype, collage  
50"x37"



Katy Murphy  
[Bumper to Bumper](#)  
Vintage Magazine pages and textured paper.  
5"x7"



[Network1](#)  
Collage from ancient manuscript images  
30" x 24"