

**STUDIO MONTCLAIR OPENS
“GO FIGURE”
AT THE SMI VIRGINIA S. BLOCK GALLERY**

*

May 2012

FOR IMMEDIATE RELEASE

Montclair, NJ, May 2012

Studio Montclair Inc. (SMI) is pleased to announce “Go Figure,” on view from **May 18 to August 14, 2012**, at the SMI Virginia S. Block Gallery. An opening reception will be held at the gallery in the Academy Square building (33 Plymouth St., Montclair, NJ) on **May 18, from 6 to 9 pm**. The gallery is open to the public 7 am to 7 pm Monday through Friday.

“Go Figure,” curated by Gallery Directors Virginia S. Block and Karen Nielsen-Fried, presents artwork showing figures in interior spaces and landscapes, interpreted both realistically and abstractly. Mediums represented include oil, acrylic, photography, pastel, monotype, and collage.

“This is a show that will engage everyone,” says Nielsen-Fried. “There is beauty, there is mystery, there is moodiness, there is joy.” She and Block chose works that used the figure to observe human qualities and emotion and to evoke a sense of place and time and story, leading the viewer not necessarily to identify a particular person, but to appreciate the rich language expressed by the human form placed in a context.

Some of the figurative works are vibrant: Rodriguez Calero's striking, almost life-size photo collages; Rudy Martin's moody oil painting in muted tones; Ludlow Smethurst's lush oil painting, *Two Figures/Red Interior*, which captures a warm shared moment between two people in a seemingly comforting and familiar space.

Figurative works need not be lush and colorful to provide visual pleasure. Ron Brown's deceptively simple photograph, *Head and Shoulders*, is a mysterious chiaroscuro that takes a moment to reveal itself, so unexpected is the perspective. Andrea Geller's two monotypes, *The Beach* and *Figure at Rest*, are deftly handled studies of light and shadow.

Bright sunlight plays a major role in an oil painting by Barbara Greaux entitled *Comin' Mama*. Says Nielsen-Fried, “Greaux uses a palette of bright yellows, greens, and reds to dramatically light a gestural rendering of a joy-filled figure of a child seen from behind, running toward, presumably, his mother. Greaux's color choices seem to halo the scene in the kind of sunlight that stuns the eyes when you step into it; the kind that makes you reach for your sunglasses. One can almost feel the heat.”

Artists featured in this exhibit are: Marjori Abramson, Ron Brown, Rodriguez Calero, Brian Croshaw, Andrea Geller, Barbara Greaux, Lissanne Lake, Arlene Lieberman, Michele LoManto, Rudy Martin, Nancy Ori, Catherine Schmitt, Ludlow Smethurst, Linda Streicher, Brian Stymest, Laurie Waite-Fellner.

Virginia S. Block is a fine artist whose work is in numerous private and corporate collections. She has had a long and varied art career, including working as an art teacher, package and logo designer, and director of incentive marketing. Block has been represented by galleries in Washington, DC, PA, NJ, FL, and NY since 1980, and is currently represented by Fredrick Clement in NYC. Karen Nielsen-Fried is primarily an encaustic painter whose work has been shown extensively in New Jersey and is in numerous private collections. She has had gallery representation in Philadelphia and Seattle.

Studio Montclair Inc. is a non-profit organization of exhibiting professional and emerging artists and others interested in the visual arts. The mission of the organization is to promote culture and education in the visual arts.

This program is made possible in part by funds from the New Jersey State Council on the Arts/Department of State, a Partner Agency of the National Endowment for the Arts and administered by the Essex County Division of Cultural and Historic Affairs.

Listing Information About the Exhibit:

SMI VIRGINIA S. BLOCK GALLERY – Second floor of the Academy Square building

“Go Figure”

Marjori Abramson, Ron Brown, Rodriguez Calero, Brian Croshaw, Andrea Geller, Barbara Greaux, Lissanne Lake, Arlene Lieberman, Michele LoManto, Rudy Martin, Nancy Ori, Catherine Schmitt, Ludlow Smethurst, Linda Streicher, Brian Stymest, Laurie Waite-Fellner

Exhibition Dates: May 18 to August 14, 2012

Opening Reception: Friday, May 18, 6 to 9 pm

Gallery Hours: Monday – Friday 7 am – 7 pm

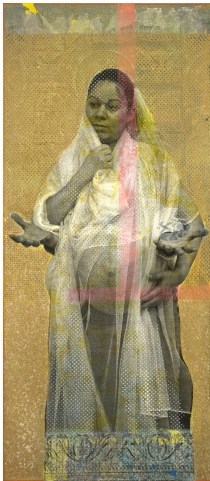
Address: 33 Plymouth Street, Montclair, NJ 07042 ~ 973 744 1818

Email: studiomontclair@aol.com

Website: www.studiomontclair.org

Media Contact: Yvette Lucas info@yvettelucas.com 973-809-8261

SMI's mailing address: 108 Orange Road, Montclair, NJ 07042



Rodriguez Calero, “Madonna Negra”
Acrylic & collage, 54”x24”



Barbara Greaux, “Comin' Mama”
Oil, 20”X16”



Nancy Ori, “Morley Baer Portrait”
Silver gelatin photo, 16”X20”



Linda Streicher, “Flip”, Oil, 24”X36”